



# RT-BOLT

**BOLT LOAD MEASUREMENT**  
SIMPLE | ACCURATE | ROBUST

Introducing RT-Bolt, the cutting-edge solution for precision bolt load measurement in all conditions and environments. Designed by leading industry experts for practical use in various real-world scenarios, RT-Bolt sets the absolute standard in accuracy and reliability.

- Industry leading patented technology
- High accuracy
- Pin integral to bolt
- No parts to loosen or degrade
- Protected measurement surfaces
- Robust impact resistant design
- No temperature limits
- No zero reading required



**Market leading accuracy**



**Market leading repeatability**



**Ultra-high temperature 800°C**



**Ultra-low (Cryogenics)**



**Bolt size 1/2" upwards**

## BENEFITS

- Increased safety
- Improved joint integrity
- Reduced operational downtime
- Reduced Opex spend
- Achieving regulatory compliance

## MEASUREMENT GAUGES

- Analogue and digital
- Wireless/wired permanent monitoring
- Standard high/low temp probes
- ksi and MPa readings
- 4-6mm bore diameters (0.16" - 0.24")



Dunsborough, Western Australia, 6281  
Tel: +61 (0)8 6369 1030 Email: info@rt-bolt.com

[rt-bolt.com](http://rt-bolt.com)



# RT-BOLT

**BOLT LOAD MEASUREMENT**  
SIMPLE | ACCURATE | ROBUST

RT-Bolt offers flexible solutions: we can integrate the RT-Bolt technology into your free-issued bolts or provide a full procurement service, delivering bolts with RT-Bolt technology ready to use.

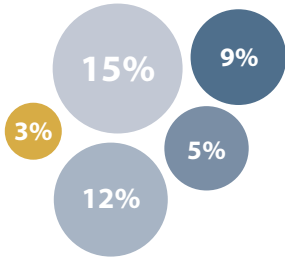
## PERFORMANCE DATA

Note: Lowest is best



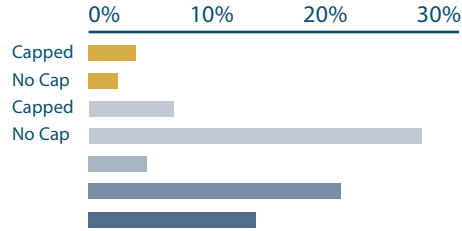
Test information independently verified by Bureau Veritas

### Accuracy



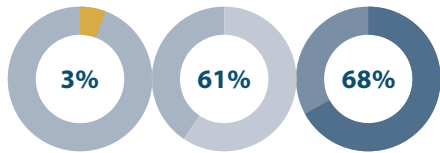
The general accuracy and repeatability of each unit under workshop operating conditions. RT-Bolt maintained the highest accuracy of all tested products.

### Effect of impact



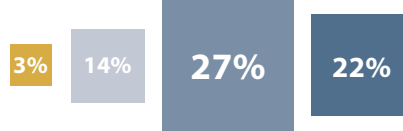
The effect of shock to the units, such as being dropped or struck with a spanner or wrench while installed. RT-Bolt was the most accurate, even after repeated severe impacts on the bolt.

### Variability



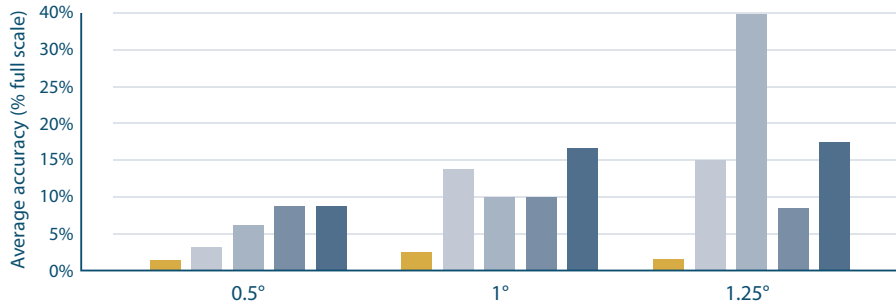
Ability of operator to influence reading either inadvertently or intentionally, due to datum points locations. RT-Bolt had the lowest variation in reading due to the protected datum points locations.

### Effect of nut position Reading variation (% full load)



The effect that bolt bending, generally caused by flange rotation, will have on the accuracy of the reading. RT-Bolt was the most accurate by comparison to all other methods.

### Effect of bolt bending



The effect that bolt bending, generally caused by flange rotation, will have on the accuracy of the reading. RT-Bolt was the most accurate by comparison to all other methods.

RT-Bolt Competitor A1 Ultrasonic Competitor B Competitor A2



Refining / Petrochem / Oil & Gas



Mining



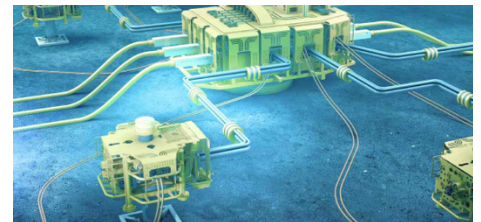
Nuclear



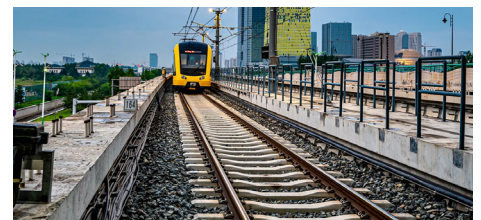
Cranes



Wind



Subsea



Rail & Heavy Machinery